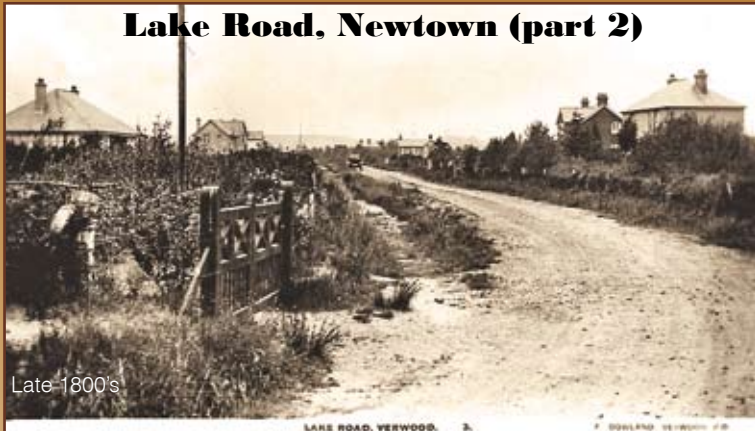


ROUNABOUT VERWOOD

PAST and PRESENT

Lake Road, Newtown (part 2)



Lake Road, like so many others in Verwood, was unsurfaced for most of its life and only made up in 1976. There are a decreasing number of the gravelled roads, frequently punctuated by large potholes, along which cars, bicycles and pedestrians had to precariously navigate. Moneyfly Road and part of Margards Lane serve to remind us what the majority of surfaces, apart from the main through roads, used to be like up until the late twentieth century.

This location which was quite difficult to find is at the junction of Lake Road with

Woodlinken Drive, with the entrance to the property out of sight far left still located in a similar position. The house visible on the left of the old photo can still be seen behind the trees in today's photo and in fact quite a few of the original properties still stand. Although some of these properties with rather generous plots have been replaced by in some cases up to five new houses!

The slightly uphill nature of the road is still apparent but the view of the hills beyond has long gone.

